

AVON

CAMPAIGN 8 2021  
BUY YOUR PREVIEW  
PRODUCTS IN  
C6 & C7 ORDERS

what's new

CARESS YOUR LIPS WITH  
**CASHMERE**

NEW! CASHMERE ESSENCE LIPCREAM



# WHAT'S NEW 101

- ▶ This is your opportunity to buy new products (“Preview Products”) in advance of the Brochure.
- ▶ You can buy 2 of everything!
- ▶ The pricing for Contender (with \$40+ in Campaign sales), Premier and President's Recognition Program is shown in *What's New*. Your Preview Product Discount is based on your Commission Level (see chart below), and will be applied at checkout.

## WHAT'S NEW GLOSSARY

### CONTENDER (C):

A Representative with Award Sales up to \$4,999 per year (C1-C26).

### PREMIER (P):

A Representative with Award Sales of \$5,000 to \$9,999 per year (C1-C26).

### PRESIDENT'S RECOGNITION PROGRAM (PRP):

A Representative with Award Sales of \$10,000 or more per year (C1-C26).

## PRODUCT ORDERING GUIDELINES:

All of our new products are featured in *What's New*. For each item, you can purchase up to two: one for you to try, and one to showcase or sell to your customers. You can experience all of the colors, sizes and varieties. For example: if a lipstick comes in eight shades, you can purchase two of each shade.

## PREVIEW PRODUCT DISCOUNT:

Your *What's New* discount is based on your Commission Level. For details about Commission Levels go to: [AvonNow.com](http://AvonNow.com) > Seller Central > Commissions and Sales Levels.

## REPRESENTATIVE LEVEL

Sales Level	Campaign Sales	Annual Sales	Beauty/Jewelry	Fashion/Home
Contender	\$0-\$39.99	—	0%	0%
Contender	\$40.00 +	—	25%	20%
Premier	No minimum	\$5,000	30%	20%

## PRESIDENT'S RECOGNITION PROGRAM LEVEL

Sales Level	Annual Sales	Beauty/Jewelry	Fashion/Home
President's Club	\$10,000	40%	25%
Honor Society	\$20,000	40%	25%
Rose Circle	\$35,000	45%	25%
David H. McConnell Club	\$65,000	45%	25%
President's Council	\$110,000	45%	25%
Inner Circle	\$220,000	50%	25%

**GET READY! Buy C8 Preview Products with your C6 and C7 orders. Order C8 Brochures when placing your C6 product orders.**

## DON'T MISS OUT!

Check out our exclusive lip balm offer, which includes freebies!

**For details, see pages 34-35.**

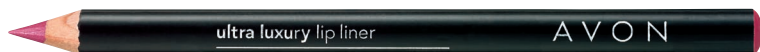


# READ OUR LIPS

Your lipstick style is an imprint of your personality. Do you go for bold, keep it simple or change it up? Here's our guide to help your customers discover their lipstick personality. With so much lip color to choose from, it's easy to find their new faves.



## SPECIAL MYSTERY GIFT!



Complement your lip look with the perfect lip liner. Get an Ultra Luxury Lip Liner (shade selected at random) with any \$20 lip color purchase from pages 4-7!



**outer core**  
coats lips in  
lavish color

**inner core**  
provides  
anti-aging  
hydration and  
protection

INTRODUCING

# Cashmere Essence Lipcream

Slip into the comfort of a new anti-aging lipstick that combines color and care for a luxurious experience.

NEW

# LUXE IS IN YOUR DNA

You're the epitome of luxurious sophistication, who never goes out of style and never seems to age.



### fmg Cashmere

#### Essence Lipcream

Melting balm-like texture glides on effortlessly, wrapping lips in luscious shine and comfort. Enriched with a concentrated blend of anti-aging ingredients, including Bio-Retinol complex, ginseng cell extract, antioxidant meadowfoam seed oil and vitamin E. Opulent high shine finish with buildable medium-to-full coverage.

.11 oz. net wt.  
reg. \$22

**now \$18**

**C \$13.50**

**P \$12.60**

**PRP \$10.80**

 Plush Peony  
937-565

 Pink Lady  
938-045

 Cozy Rosy  
938-284

 Chic Cocoa  
938-375

 Honey Mandarin  
937-570

 Cheeky Red  
938-963

 Cherry Rush  
937-584

 Coral Charm  
937-680

 Day Dreamer  
939-238

 Summer Berry  
938-781



**SPECIAL MYSTERY GIFT!** SEE PAGE 3 FOR DETAILS

# YOU ALWAYS KEEP THEM GUESSING

You express yourself confidently  
and love to change things up  
with every mood and attitude.

### fmg Glimmer Satin Lipstick

Lightweight, smooth and creamy formula is infused with pomegranate extract to help provide antioxidant benefits. Soft satin finish delivers rich, comfortable color with buildable medium-to-full coverage. .10 oz. net wt. reg. \$11 **now \$8.49**

**C \$6.37 P \$5.94 PRP \$5.09**



Wildrose  
943-624



Hibiscus  
943-461



Windstorm  
939-572



Songbird  
942-609



Blaze  
942-518



Fog  
939-591



Thunderbird  
941-727



Violet Night  
943-662



Wildrose  
943-624



Celestial  
942-412



Rose Angel  
943-237



Luna  
941-397



Thunder  
943-920



Poppy  
942-632



Cyclone  
940-190



Earth Angel  
939-587



Sierra Sunset  
940-568



Wildflower  
943-590



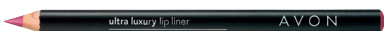
Whirlwind  
942-431



Nova  
943-677



Firebolt  
942-450



**SPECIAL MYSTERY GIFT!** SEE PAGE 3 FOR DETAILS

NEW

# INTRODUCING Glimmer Satin Lipstick

Enticing and inspiring  
spectrum of 20 versatile  
and expressive shades.



# LIP GUIDE

There's something for everyone!  
 Help your customers find the lip products to fit their needs with this easy-to-use guide.



## STAYING POWER



**FMG CASHMERE LIPCREAM - SATIN**  
**FORM:** Lipstick  
**FINISH:** Decadent Satin  
**BENEFIT:** Infused with vitamins C & E, shea butter, coconut & avocado oils



**FMG CASHMERE LIPCREAM - MATTE**  
**FORM:** Lipstick  
**FINISH:** Plush Matte  
**BENEFIT:** Infused with vitamins C & E, shea butter, coconut & avocado oils



**THE FACE SHOP INK LIP TINT**  
**FORM:** Liquid Lip Stain  
**FINISH:** Lightweight Matte  
**BENEFIT:** Long-lasting formula with a unique teardrop doe foot for precise application

## ANTI-AGING



**FMG CASHMERE ESSENCE LIPCREAM**  
**FORM:** Lipstick  
**FINISH:** Opulent High-Shine  
**BENEFIT:** A blend of anti-aging ingredients, including Bio-Retinol complex, ginseng cell extract, meadowfoam seed oil and vitamin E



**MATTITUDE SOFT MATTE LIQUID LIP**  
**FORM:** Liquid Lipstick  
**FINISH:** Soft Matte  
**BENEFIT:** Infused with vitamin E & poppy seed oil



**BEYOND COLOR LIP CONDITIONER**  
**FORM:** Lip Balm  
**FINISH:** Soft Satin  
**BENEFIT:** Colorless formula plumps, firms and protects with collagen, retinol and SPF 15

The perfect first step!  
 Layer under any lip color.



**2-IN-1 LIP TATTOO LIP LINE & FILL DUO**  
**FORM:** Lip Stain  
**FINISH:** Weightless Matte  
**BENEFIT:** Infused with sunflower seed oil

Wear underneath a lip color in a similar shade to make your pout last even longer!



## EXPERIMENTAL

## NATURAL



### FMG GLIMMER SATIN LIPSTICK

**FORM:** Lipstick

**FINISH:** Creamy Satin

**BENEFIT:** Enriched with pomegranate extract that provides antioxidant benefits



### BIRTHDAY BALM LIP CRAYON

**FORM:** Balm Lip Crayon

**FINISH:** Smooth Satin

**BENEFIT:** Butter-soft balm, shea butter with a hint of color and shine in nude tones



### FMG INK HIGH-GLOSS LACQUER

**FORM:** Lip Vinyl

**FINISH:** High-Shine

**BENEFIT:** High pigment color infused with sweet almond oil, borage seed oil, calendula oil, chamomile flower oil, lavender oil, rose flower oil and rosemary leaf oil



### VDL TINT BAR TRIPLE SHOT

**FORM:** Lip Tint Balm

**FINISH:** Shiny Satin

**BENEFIT:** 3 shades combine for an all-in-one primer, balm and tint that deliver sheer color. Enriched with moisturizing royal jelly and nourishing ester oil.



### GLIMMERKISS

**FORM:** Liquid Lipstick

**FINISH:** Sparkling Matte

**BENEFIT:** Water-resistant, long-lasting, vivid color

Perfect for the trendsetter and anyone who loves to shine!



### VDL EXPERT COLOR LIP CUBE MARBLE GLOW

**FORM:** Lip Tint Balm

**FINISH:** Soft Satin

**BENEFIT:** Instant moisturizing and conditioning formula is 80% oil, with very sheer color in a unique cube shape



### THE FACE SHOP FLAT VELVET LIPSTICK

**FORM:** Crayon Lipstick

**FINISH:** Powdery Velvet Matte

**BENEFIT:** Enriched with soothing calendula oil. Unique square tip contours and fills lips.



### AVON CRAVE LIP GLOSS

**FORM:** Lip Gloss

**FINISH:** Ultra Shine

**BENEFIT:** Vitamin E enriched formula features addictive gourmand scents

Two-in-one, with addictive gourmand scents and a sheer sheen of color.



### THE FACE SHOP FLAT TWO-TONE LIPSTICK

**FORM:** Crayon Lipstick

**FINISH:** Shiny Satin

**BENEFIT:** Complementary shades create an instantly lined, or ombré lip look



### AVON FLAVOR SAVERS LIP BALM

**FORM:** Lip Balm

**FINISH:** Soft Satin

**BENEFIT:** Instantly smooths and moisturizes lips



NEW

**Ginza Stefany**  
**Always**  
**Beside You**  
**Eau de Parfum**  
*warm & exotic*  
1.69 fl. oz.  
**257-668**  
reg. \$52  
**now \$43**  
**C \$32.25**  
**P \$30.10**  
**PRP \$25.80**

INTRODUCING  
**GINZA STEFANY**

Long ago, a traveler from afar fell in love with an elegant beauty in the bustling Ginza district of Tokyo. From a chance encounter to forbidden passion and heartbreaking distance, their love endures through hundreds of letters. Introducing a new fragrance collection that explores the story of our steadfast lovers and the power of their eternal love.

Our lovers share a life apart, but always together. **Always Beside You** recreates the beauty of a warm summer day long ago. Intoxicating notes of orange leaf, tuberose and earthy musk filled the air as Steve and Stefany shared a loving embrace.

h  
here  
and I am  
or.  
ternal love.  
Steve

# LATHER. SCENT. REPEAT.

Introducing new luxurious shampoos in fave classic Avon scents for the ultimate sensory shower experience.



## Shampoo

The rich, nourishing lather cleanses and protects without weighing hair down for ultimate volume. Lightweight formula leaves hair feeling soft and looking healthy, vibrant and beautifully scented. Formulated to be gentle on all hair types. Each, 11.8 fl. oz. reg. \$13 **now \$10.99 each**

**C** \$8.24

**P** \$7.69

**PRP** \$6.59

## Rare Pearls Shampoo 247-220

Luxe up your shower with notes of shimmering magnolia, white pepper and creamy rosewood.

## Far Away Shampoo 247-216

Enjoy the exotic blend of freesia, sheer jasmine and enticing amber with every hair toss.

## Haiku Shampoo 247-235

Create your me moment with a harmonious blend of Japanese yuzu, delicate muguet and blonde woods.



Complete her collection!  
This is the perfect add-on to her eau de parfum and body lotion.

NEW

# Enhance your grooming routine

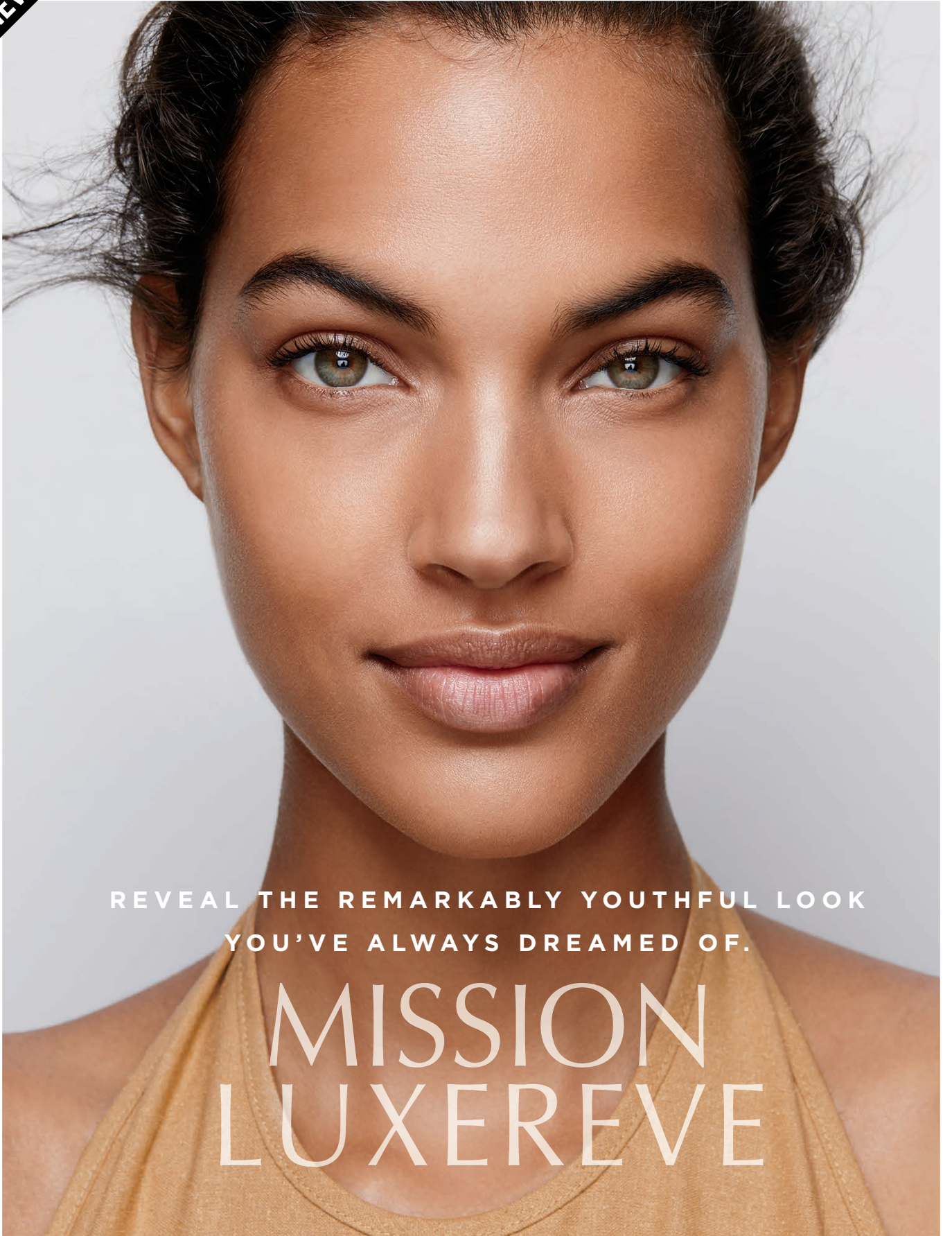


**Studio 1886  
Legendary  
All-in-One Gel  
Moisturizer**  
Lightweight gel  
moisturizer that softens  
beard hair and helps  
to soothe irritated skin  
after shaving. 5.1 fl. oz.  
505-960 reg. \$19  
now \$14.99  
C \$11.24  
P \$10.49  
PRP \$8.99

**Studio 1886  
Legendary  
All-in-One Hair  
& Body Wash**  
Richly lathering  
formula that leaves  
hair and skin feeling  
clean and lightly  
scented. 6.7 fl. oz.  
505-936 reg. \$19  
now \$14.99  
C \$11.24  
P \$10.49  
PRP \$8.99

Complements  
the eau de  
toilette—layer  
to enhance  
the scent!

NEW



REVEAL THE REMARKABLY YOUTHFUL LOOK  
YOU'VE ALWAYS DREAMED OF.

# MISSION LUXEREVE

LIMITED EDITION

# A Rejuvenating Luxury Combo

Featuring a **Face Massager** made from blue aventurine stone to help stimulate circulation and promote absorption of serum and cream to help visibly firm and tighten as it cools skin.



Use massager daily  
1. Apply Mission Luxereve Serum.  
2. Glide roller upward over the forehead, cheeks and neck (repeat at least three times).  
3. Apply Mission Luxereve Cream.



## MISSION LUXEREVE SERUM GIFT SET

Deluxe 3-piece collection includes:

- NEW! Blue Aventurine Rolling Face Massager.
- Full-Size Luxereve Serum 1.01 fl. oz.
- Half-Size Luxereve Cream .88 oz. net wt.

**536-494**  
reg. \$225 **now \$180 the set**  
**C \$135**  
**P \$126 PRP \$108**

## PRO TIPS FROM JEANNINE

### Learn about the products

The more you know about the benefits, the more you can talk with confidence! Check out AVON U, and refer to the handy one-pagers on the products.

### Try it yourself!

Use the product to create your own testimonial. You can try samples too (they're not just for customers!) to help speak to the luxurious texture and feel of the products.

### Less is more

Simplify your message (stick to 1 or 2 key statements), but be the authority with product details.

### Talk it up!

For inspiration, see what others are saying...these are real results shared by others like you!

- "My skin looks and feels so hydrated ALL day."
- "The lines on my forehead are less visible."
- "I've never had so many compliments on my skin."

### Find your your target customer

Identify skin care lovers (we all know them!). This collection is perfect for:

- Anyone experiencing the beginning signs of aging: losing radiance and elasticity, dealing with dryness, looking for visibly firm skin.



**JEANNINE WHITVER**  
SENIOR MANAGER,  
PRODUCT  
EDUCATION, L&D

[jjlovesbeauty](#)



# spring sparkle

shine on with a  
collection that'll add a  
radiant twinkle.

**Everyday Layered  
Disc Necklace**

16½" L with ¾" extender.  
Lobster clasp closure.

Silvertone 514-406

Goldtone 512-805

reg. \$19.99

now \$14.99 each

**C** \$11.24

**P** \$10.49

**PRP** \$8.99

available  
in both  
silvertone and  
goldtone



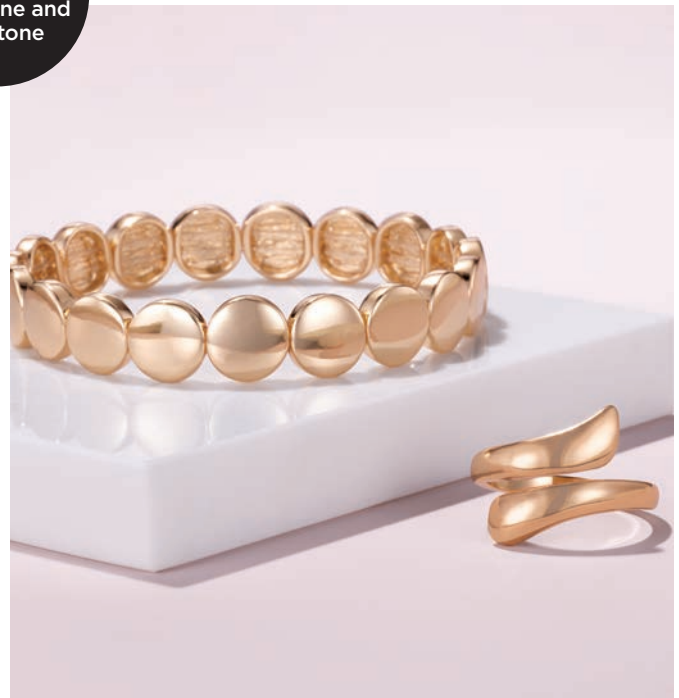
NEW



6-pair pack



all available  
in both  
silvertone and  
goldtone



**Everyday Earring Pack**  
6-pair set.  
Pierced.  
Goldtone  
514-425  
Silvertone  
514-444  
reg. \$16.99  
now **\$12.99**  
each pack  
**C** \$9.74  
**P** \$9.09  
**PRP** \$7.79

**Everyday Linear Earrings**  
2" L pierced  
drop.  
Silvertone  
521-954  
Goldtone  
521-753  
reg. \$8.99  
now **\$6.99**  
each  
**C** \$5.24  
**P** \$4.89  
**PRP** \$4.19

**Everyday Hoop Earrings**  
2 3/4" diam.  
Pierced.  
Silvertone  
514-607  
Goldtone  
514-459  
reg. \$10.99  
now **\$8.99**  
each  
**C** \$6.74  
**P** \$6.29  
**PRP** \$5.39

**Everyday Disc Bracelet**  
Stretch  
bracelet, one  
size fits most.  
Silvertone  
515-197  
Goldtone  
515-125  
reg. \$16.99  
now **\$12.99**  
each  
**C** \$9.74  
**P** \$9.09  
**PRP** \$7.79

**Everyday Bypass Ring**  
Goldtone  
Sizes:  
6 515-269 8 515-292  
10 515-307  
Silvertone  
Sizes:  
6 515-345 8 515-350  
10 515-364  
reg. \$8.99  
now **\$6.99** each  
**C** \$5.24  
**P** \$4.89  
**PRP** \$4.19

**WEAR IT & SHARE IT!**  
Post photos  
of your faves,  
and remind  
your customers  
to join in too.  
#AvonJewelry



**Pearly Layered  
Necklace**

Silvertone with  
pearlesque  
beads. Longest,  
36" L with  
3/2" extender;  
shortest, 30" L.

**516-724**

reg. \$22.99

**now \$16.99**

**C \$12.74**

**P \$11.89**

**PRP \$10.19**



**Pearly Ring**

Silvertone with  
pearlesque bead.

Sizes:

6 **515-493**

8 **515-641**

10 **515-770**

reg. \$9.99

**now \$7.99**

**C \$5.99**

**P \$5.59**

**PRP \$4.79**

**Pearly Mega  
Stud Earring Pack**

15 pairs of pierced  
studs, 1/4" to 1" diam.

**515-489**

reg. \$16.99

**now \$12.99**

**the pack**

**C \$9.74**

**P \$9.09**

**PRP \$7.79**

**Stone Accent  
Metal Link  
Watch**

Silvertone  
with white  
dial. Approx.  
7 3/4" L with  
buckle.

30mm diam.

case. **516-963**

reg. \$42.99

**now \$32.99**

**C \$24.74**

**P \$23.09**

**PRP \$19.79**



15-pair  
pack



NEW

# a moment to shine

the look of diamonds, pearls and gold always dazzles



necklace and earring sets

**Teardrop Necklace and Earring Set**  
Silver-tone with glass drop stones. Chain, 16 1/2" L with 3 1/2" extender. Pierced studs, 1/2" L. **516-671**  
reg. \$12.99 **now \$9.99 the set**  
**C** \$7.49 **P** \$6.99 **PRP** \$5.99

**Circle Pendant Necklace and Earring Set**  
Goldtone. Chain, 16 1/2" L with 3 1/2" extender. Pierced drops, 1/2" L. **515-460**  
reg. \$12.99 **now \$9.99 the set**  
**C** \$7.49 **P** \$6.99 **PRP** \$5.99

**Pearly Necklace and Earring Set**  
Silver-tone with pearlesque bead. Chain, 16 1/2" L with 3 1/2" extender. Pierced studs, approx. 1/2" diam. **516-485**  
reg. \$12.99 **now \$9.99 the set**  
**C** \$7.49 **P** \$6.99 **PRP** \$5.99

NEW



# candy drops

pastel-colored stones help lift your spring look



Pink  
519-704



sets of 3 bracelets  
Champagne  
521-089



Purple  
519-776



Blue  
519-867



Pink  
517-280



Champagne  
519-690



Purple  
517-276



Blue  
518-636

**Pastel Drop Earrings**  
Pierced  
1" L colored drop with CZ accent.  
reg. \$12.99  
**now \$9.99**  
C \$7.49  
P \$6.99  
PRP \$5.99

**Denim Watch**  
Denim strap with silvertone case.  
9" L strap with buckle. 32mm diam. case.  
521-294  
reg. \$36.99  
**now \$27.99**  
C \$20.99  
P \$19.59  
PRP \$16.79

**Pastel Stretch Bracelet Set**  
Set of 3 with teardrop accent.  
One size fits most.  
reg. \$16.99  
**now \$12.99 the set**  
C \$9.74  
P \$9.09  
PRP \$7.79



# STERLING OPULENCE

Genuine sterling silver jewelry with  
CZs and created opals

### Created Opal Solitaire Ring

1/4" diam.

Sizes:

5 537-228

6 533-969

7 534-711

8 534-912

9 536-365

10 536-422

reg. \$49.99

now \$39.99

**C** \$29.99

**P** \$27.99

**PRP** \$23.99

### Created Opal Earrings

1/4" diam.

Pierced.

533-901

reg. \$49.99

now \$39.99

each

**C** \$29.99

**P** \$27.99

**PRP** \$23.99

### Created Opal Pendant Necklace

18" L with 1"

L extender.

Pendant, 1/4"

diam. 533-916

reg. \$58.99

now \$44.99

**C** \$33.74

**P** \$31.49

**PRP** \$26.99

### Created Opal Bracelet

One size fits

most. Created

opal, 1/4" diam.

533-954

reg. \$74.99

now \$59.99

**C** \$44.99

**P** \$41.99

**PRP** \$35.99



### Statement CZ Necklace

18" L with 1" extender.

CZ, 1 carat equivalent.

538-114

reg. \$64.99

now \$49.99

**C** \$37.49

**P** \$34.99

**PRP** \$29.99

### Statement CZ Ring

CZ, 1 carat equivalent.

Sizes:

5 538-520 8 538-812

6 538-793 9 538-956

7 538-808 10 538-960

reg. \$69.99

now \$55.99

**C** \$41.99 **P** \$39.19

**PRP** \$33.59

### CZ Baguette Ring

CZ, 1/2 carat

equivalent.

Sizes:

5 539-680 8 540-020

6 539-971 9 540-130

7 539-986 10 540-144

reg. \$49.99

now \$39.99

**C** \$29.99

**P** \$27.99

**PRP** \$23.99

### Statement CZ Earrings

Each CZ, 1/2 carat

equivalent. 538-004

reg. \$64.99

now \$49.99

**C** \$37.49 **P** \$34.99

**PRP** \$29.99



STUDIO  
1886

# IT'S A BREEZE

Time to give your  
wardrobe a refresh with  
*effortless spring styles!*

❖ **2-Piece  
Lounge Set**

Tan pullover top with  
long sleeves and pull-  
on pant with elastic  
waistband, cuffs and  
side seam pockets.  
Polyester/spandex.  
Center back length:  
23" on medium;  
26½" on 1X. Inseam:  
29½" for all sizes.  
Hand wash, line dry.  
Imported.

XS(0-2) **511-407**

S(4-6) **511-851**

M(8-10) **512-403**

L(12-14) **512-422**

XL(16) **512-437**

1X(18W-20W) **512-441**

2X(22W-24W) **512-456**

3X(26W-28W) **512-475**

reg. \$64.99

**now \$49.99**

**C \$39.99**

**P \$39.99**

**PRP \$37.49**

Model is wearing  
Lace Up Espadrilles,  
coming in Campaign 10.



NEW



crisscross details lighten this top up for spring



attached face mask

❖ **Crisscross Back Top**

Pullover top with crisscross detail on back, rounded hem and short sleeves. Polyester/viscose/spandex. Center back length: 28" on medium; 29½" on 1X. Machine wash, dry flat. Imported. reg. \$39.99

<b>Blue</b>	<b>Blue/Green</b>	<b>Peach</b>
XS(0-2) <b>479-456</b>	XS(0-2) <b>481-892</b>	XS(0-2) <b>481-137</b>
S(4-6) <b>479-570</b>	S(4-6) <b>482-114</b>	S(4-6) <b>481-232</b>
M(8-10) <b>480-130</b>	M(8-10) <b>482-133</b>	M(8-10) <b>481-247</b>
L(12-14) <b>480-327</b>	L(12-14) <b>482-148</b>	L(12-14) <b>481-448</b>
XL(16) <b>480-810</b>	XL(16) <b>482-152</b>	XL(16) <b>481-759</b>
1X(18W-20W) <b>482-205</b>	1X(18W-20W) <b>482-171</b>	1X(18W-20W) <b>482-239</b>
2X(22W-24W) <b>482-210</b>	2X(22W-24W) <b>482-186</b>	2X(22W-24W) <b>482-243</b>
3X(26W-28W) <b>482-224</b>	3X(26W-28W) <b>482-190</b>	3X(26W-28W) <b>482-167</b>

now \$29.99 each **C** \$23.99 **P** \$23.99 **PRP** \$22.49

❖ **Hooded Pullover with Attached Face Mask**

Violet sweatshirt with hood and built-in face mask with ear loops, plus front pocket with double zippers. Rayon/polyester. Center back length: 26" on medium; 28" on 1X. Machine wash, dry flat. Imported.

XS(0-2) <b>486-435</b>	XL(16) <b>487-628</b>
S(4-6) <b>486-660</b>	1X(18W-20W) <b>487-780</b>
M(8-10) <b>486-708</b>	2X(22W-24W) <b>487-910</b>
L(12-14) <b>487-226</b>	3X(26W-28W) <b>487-943</b>

reg. \$49.99  
now \$39.99  
**C** \$31.99 **P** \$31.99 **PRP** \$29.99

**NEW**

**cool as a breeze in styles fit to be tie dyed**



❖ **Pullover Tie-Dye Top**  
Tie-dye printed top with short sleeves, rounded neckline and straight hem. Polyester/spandex. Center back length: 26" on medium; 28" on 1X. Machine wash, dry flat. Imported.

XS(0-2) **483-402**  
S(4-6) **483-417**  
M(8-10) **483-436**  
L(12-14) **483-440**  
XL(16) **483-455**  
1X(18W-20W) **483-460**  
2X(22W-24W) **483-493**  
3X(26W-28W) **483-656**  
reg. \$48.99

**now \$38.99**

**C \$31.19**

**P \$31.19**

**PRP \$29.24**

❖ **Knit Pant with Pockets**  
Navy pull-on pant with rib elastic waistband, drawstring detail, side seam pockets and ruched detail at hem. Cotton/spandex. Inseam: 26½" for all sizes. Machine wash, dry flat. Imported.

XS(0-2) **500-289**  
S(4-6) **500-308**  
M(8-10) **500-331**  
L(12-14) **500-365**  
XL(16) **500-399**  
1X(18W-20W) **500-418**  
2X(22W-24W) **502-444**  
3X(26W-28W) **503-072**  
reg. \$42.99

**now \$32.99**

**C \$26.39**

**P \$26.39**

**PRP \$24.74**

**SIZE CHART PAGES 22 THRU 28**

SIZE	BUST	WAIST	HIP
XS 0/2	30.5"-32"	23.5"-25"	32.5"-34"
S 4/6	33.5"-35"	26.5"-28"	35.5"-37"
M 8/10	36.5"-38"	29.5"-31"	38.5"-40"
L 12/14	39.5"-41"	32.5"-34"	41.5"-43"
XL 16	43"-44"	35.5"-36.5"	44.5"-45.5"
1X 18W/20W	46.5"-48.5"	39"-41"	48"-50"
2X 22W/24W	50.5"-52.5"	43"-45"	52"-54"
3X 26W/28W	54.5"-56.5"	47"-49"	56"-58"

Visit [avon.com/fitguide](http://avon.com/fitguide) for additional size and fit information.

Model is wearing  
Crisscross Embellished Sandals,  
sold on page 29.



## Easy silhouettes for easy days. Studio 1886 redefines spring.



### ❖ Ruffle-Sleeve Shift Dress

Coral eyelet-detail dress with double ruffle short sleeves. Polyester/spandex lining. Center back length: 37" on medium; 38" on 1X. Machine wash, line dry. Imported.

XS(0-2) **490-400**

S(4-6) **490-415**

M(8-10) **490-449**

L(12-14) **491-149**

XL(16) **491-153**

1X(18W-20W) **492-035**

2X(22W-24W) **492-786**

3X(26W-28W) **492-991**

reg. \$44.99 **now \$34.99**

**C** \$27.99 **P** \$27.99

**PRP** \$26.24



### ❖ Peasant Dress

Purple peasant-style dress with trim detail on front panel, tassels and double ruffle sleeves. Rayon/polyester/spandex lining. Center back length: 36" on medium; 38" on 1X. Machine wash, dry flat. Imported.

XS(0-2) **493-213**

S(4-6) **493-983**

M(8-10) **494-019**

L(12-14) **494-023**

XL(16) **494-057**

1X(18W-20W) **494-061**

2X(22W-24W) **494-918**

3X(26W-28W) **495-273**

reg. \$56.99 **now \$44.99**

**C** \$35.99 **P** \$35.99

**PRP** \$33.74



### ❖ Ribbed Top with Lace Insets

Teal ribbed V-neckline top with lace insets and elastic hem sleeves. Polyester/cotton/nylon/rayon/spandex. Center back length: 25" on medium; 27" on 1X. Machine wash, dry flat. Imported.

XS(0-2) **483-857**

S(4-6) **483-876**

M(8-10) **484-652**

L(12-14) **484-667**

XL(16) **484-671**

1X(18W-20W) **484-762**

2X(22W-24W) **484-796**

3X(26W-28W) **485-792**

reg. \$44.99 **now \$34.99**

**C** \$27.99 **P** \$27.99

**PRP** \$26.24



### ❖ Tie Waist Printed Dress

Printed navy dress with tie-waist detail and three-quarter-length sleeves. Polyester/spandex. Center back length: 37" on medium; 37½" on 1X. Machine wash, line dry. Imported.

XS(0-2) **495-330**

S(4-6) **495-345**

M(8-10) **495-379**

L(12-14) **495-417**

XL(16) **495-876**

1X(18W-20W) **497-549**

2X(22W-24W) **497-553**

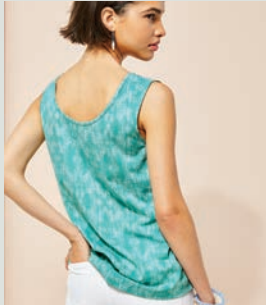
3X(26W-28W) **497-936**

reg. \$52.99 **now \$41.99**

**C** \$35.59 **P** \$33.59

**PRP** \$33.59

**tanks reverse  
from v-neck  
to scoop neck**



**NEW COLORS**

**❖ 4 Pack Everyday Reversible Tanks**

Includes tie-dye print, peach, teal blue and violet reversible tanks. Cotton/polyester.

Center back length: 26" on medium; 27 1/2" on 1X. Machine wash, dry flat. Imported.

XS(0-2) **478-498**

S(4-6) **478-502**

M(8-10) **478-521**

L(12-14) **478-574**

XL(16) **478-938**

1X(18W-20W) **479-035**

2X(22W-24W) **479-327**

3X(26W-28W) **479-441**

reg. \$46.99

**now \$36.99 the pack**

**C \$29.59**

**P \$29.59**

**PRP \$27.74**

Model is wearing Colorful Slip-On Sneakers, sold on page 29.

NEW

top it off... keep it casual for spring



❖ **Tiered Short-Sleeve Top**

Orchid two-tiered detailed top with V-neckline and short sleeves. Cotton/modal. Center back length: 26" on medium; 28 1/2" on 1X. Machine wash, dry flat. Imported. XS(0-2) **482-258** S(4-6) **482-262** M(8-10) **482-296** L(12-14) **482-315** XL(16) **482-607** 1X(18W-20W) **482-626** 2X(22W-24W) **482-650** 3X(26W-28W) **482-664** reg. \$42.99 **now \$32.99** **C** \$26.39 **P** \$26.39 **PRP** \$24.74

❖ **Hooded Cardigan with Pockets**

Grey open-front cardigan with hood, side seam pockets and long sleeves with button tab detail. Cotton/polyester/spandex. Center back length: 30" on medium; 31" on 1X. Machine wash, dry flat. Imported. XS(0-2) **487-981** S(4-6) **488-390** M(8-10) **488-514** L(12-14) **488-681** XL(16) **488-753** 1X(18W-20W) **488-768** 2X(22W-24W) **489-195** 3X(26W-28W) **490-396** reg. \$57.99 **now \$45.99** **C** \$36.79 **P** \$36.79 **PRP** \$34.49

❖ **High-Low Printed Blouse**

Printed top with high/low hem and side slits, V-neck placket and long sleeves with button tab detail. Polyester/spandex. Center back length: 29" on medium; 31 1/2" on 1X. Machine wash, line dry. Imported. XS(0-2) **482-717** S(4-6) **482-846** M(8-10) **482-941** L(12-14) **482-956** XL(16) **482-960** 1X(18W-20W) **483-273** 2X(22W-24W) **483-330** 3X(26W-28W) **483-364** reg. \$44.99 **now \$34.99** **C** \$27.99 **P** \$27.99 **PRP** \$26.24

get back  
to the  
basics  
with go-to  
leggings  
and every  
day tanks.

❖ **2 Pack Reversible Tanks**  
Includes black and white tanks that reverse from V-neck to scoop neck. Cotton/polyester. Center back length: 26" on medium; 27 1/2" on 1X. Machine wash, dry flat. Imported.  
XS(0-2) **478-115**  
S(4-6) **478-120**  
M(8-10) **478-134**  
L(12-14) **478-153**  
XL(16) **478-244**  
1X(18W-20W) **478-316**  
2X(22W-24W) **478-335**  
3X(26W-28W) **478-369**  
reg. \$24.99  
**now \$18.99 the pack**  
**C \$15.19**  
**P \$15.19**  
**PRP \$14.24**

Models are wearing  
Crisscross Embellished  
Sandals, sold on page 29.

**PACKS  
OF 2**

2 Pack  
Leggings  
are  
available  
in the  
Brochure



**NEW**

❖ **Colorful Slip-On Sneaker**

Canvas sneaker with elastic for easy slip on. Man-made materials. Imported.  
reg. \$39.99 **now \$29.99 each pair**

**C** \$23.99 **P** \$23.99 **PRP** \$22.49

Purple

6M 519-499 9M 523-479  
7M 519-503 10M 526-076  
8M 519-518 11M 528-633

Teal

6M 528-667 9M 528-959  
7M 528-887 10M 528-978  
8M 528-944 11M 533-681

Peach

6M 512-480 9M 513-012  
7M 512-509 10M 513-467  
8M 512-638 11M 513-730



❖ **Crisscross Embellished Sandal**

Glitter and metallic crisscross straps. Man-made materials. Imported.

Black	Rose Gold
6M 533-696	6M 542-295
7M 533-700	7M 542-500
8M 533-715	8M 542-630
9M 533-720	9M 542-769
10M 533-734	10M 542-773
11M 533-768	11M 543-177

reg. \$37.99  
**now \$28.99 each pair**

**C** \$23.19  
**P** \$23.19  
**PRP** \$21.74

**NEW COLORS**

❖ **Signature Loafer**  
Slip-on loafer with  
silvertone hardware  
and cushion insole  
for added comfort.  
Man-made materials.  
Imported.  
reg. \$49.99  
now **\$39.99** each pair  
**C** \$31.99  
**P** \$31.99  
**PRP** \$29.99

Tan  
6M **543-234**  
7M **543-416**  
8M **543-420**  
9M **543-621**  
10M **543-636**  
11M **543-799**

Violet  
6M **550-046**  
7M **550-050**  
8M **550-070**  
9M **550-084**  
10M **550-099**  
11M **550-103**

Blue  
6M **543-803**  
7M **543-966**  
8M **544-063**  
9M **549-118**  
10M **549-137**  
11M **550-008**

NEW

# REFRESH YOUR FOOTWEAR

*quick-drying  
& lasting  
fresh scent!*

❖ **Fresh Fiji Shoe Deodorizer**

Eliminates tough odors on contact with the power of baking soda and persimmon. Great for all kinds of shoes, from leather to cotton.

10 fl. oz. **114-092**

reg. \$9.99

**now \$7.99**

**C \$6.39**

**P \$6.39**

**PRP \$5.99**



NEW

# smooth things over

a shape-smoothing style designed to contour your curves.

❖ **Bali® One Smooth U® Posture Boost with EverSmooth™ Back Underwire Bra (DF3450)**

Designed for all-over back support and smoothing. Features breathable cups to help keep you cool and no-slip straps. Front closure. Nylon/spandex. Hand wash, line dry. Imported.

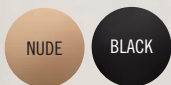
**Nude** (shown) or **Black**: 36-44C,D,DD reg. \$44

now **\$35.99**

**C** \$28.79

**P** \$28.79

**PRP** \$26.99



*EverSmooth™ back designed for maximum support and smoothing*

Go to [AvonNow.com](http://AvonNow.com) to order your preview products.

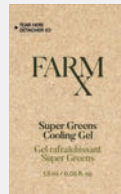


# LOVE AT FIRST TRY!

Samples are a win-win...fun freebies for your customers, and potential full-size sales for you.



**FARM RX BAKUCHIOL EYE CREAM**  
Pack of 3 Samples  
307-689  
REG. \$1  
**NOW 79c**



**FARM RX SUPER GREENS MULTI-VITAMIN MOISTURE CREAM**  
Pack of 3 Samples  
307-913  
reg. \$1  
**NOW 59c**



**FARM RX SUPER GREENS COOLING GEL**  
Pack of 3 Samples  
307-693  
reg. \$1  
**NOW 59c**



**ISA KNOX ANEW LX ULTIMATE DAY CREAM**  
Pack of 3 Samples  
148-491  
reg. \$1  
**NOW 69c**



**ISA KNOX ANEW LX ULTIMATE REJUVENATING SERUM**  
Pack of 3 Samples  
148-779  
reg. \$1  
**NOW 89c**



**ANEW CLINICAL POWER SERUM**  
Pack of 5 Samples  
105-159  
reg. \$2.50  
**NOW \$2**



**ANEW ULTIMATE SUPREME DUAL ELIXIR**  
Pack of 5 Samples  
669-694  
reg. \$2.50  
**NOW \$2.15**



**VITAMIN C ILLUMINATING PRIMING MOISTURIZER**  
Pack of 5 Samples  
962-709  
reg. \$2.50  
**NOW \$2.15**



**AQUA BOMB**  
Pack of 3 Samples  
397-904  
reg. \$3  
**NOW \$1.40**



**MOISTURIZING BOMB**  
Pack of 3 Samples  
397-923  
reg. \$3  
**NOW \$1.40**



**HYDRA FUSION GEL CREAM**  
Pack of 5 Samples  
791-048  
**\$2.50**



**#NAKEDPROOF FIRMING CREAM**  
Pack of 5 Samples  
024-622  
reg. \$3  
**NOW \$1.75**



**#NAKEDPROOF ANTI-CELLULITE GEL** Pack of 5 Samples  
378-925  
reg. \$3  
**NOW \$1.75**



**MISSION LUXEREVE**  
Pack of 4 Samples (2 Cream & 2 Serum samples)  
969-464  
reg. \$8.50  
**NOW \$6.50**



**MISSION LUXEREVE ESSENCE**  
Pack of 3 Samples  
258-129  
reg. \$2  
**NOW \$1.20**



**GREEN GODDESS FACIAL OIL**  
Pack of 5 Samples  
211-000  
reg. \$2.50  
**NOW \$2.15**



**PHYSIOGEL DAILY MOISTURE THERAPY FACIAL CREAM**  
Pack of 3 Samples  
353-819  
reg. \$1.50  
**NOW 69c**



**EYE LIFT PRO** Pack of 5 Samples  
186-096 **\$2.50**



**LYRD ROSE DU SOLEIL** (fresh & vibrant)  
Pack of 5 Samples  
514-387  
reg. \$3  
**NOW \$1.85**



**LYRD BOUQUET DE FREESIA** (fresh & clean)  
Pack of 5 Samples  
359-563  
reg. \$3  
**NOW \$1.85**



**LYRD SPARKLING NEROLI** (fresh & vibrant)  
Pack of 5 Samples  
612-359  
reg. \$3  
**NOW \$1.85**



**STUDIO 1886 LEGENDARY** (fresh & aromatic)  
Pack of 5 Samples  
398-657  
reg. \$4.25  
**NOW \$2.50**



**STUDIO 1886 GILDED** (fresh & vibrant)  
Pack of 5 Samples  
890-020  
reg. \$4.25  
**NOW \$2.50**



**STUDIO 1886 TECHTOPIAN** (fresh & vibrant)  
Pack of 5 Samples  
890-088  
reg. \$4.25  
**NOW \$2.50**



**STUDIO 1886 XXI** (fresh & clean)  
Pack of 5 Samples  
890-092  
reg. \$4.25  
**NOW \$2.50**



**MESMERIZE** (warm & intoxicating)  
Pack of 5 Samples  
006-449  
reg. \$2.25  
**NOW \$1.75**



**LYRD ARTISAN CHERRY VETIVER** (warm & indulgent)  
Pack of 5 Samples  
828-590  
reg. \$4.25  
**NOW \$2.50**



**LYRD ARTISAN SANTAL MUSK** (warm & exotic)  
Pack of 5 Samples  
830-232  
reg. \$4.25  
**NOW \$2.50**



**RARE PEARLS** (warm & dreamy)  
Pack of 5 Samples  
006-400  
reg. \$2.25  
**NOW \$1.75**



**FAR AWAY** (warm & exotic)  
Pack of 5 Samples  
006-434  
reg. \$2.25  
**NOW \$1.75**



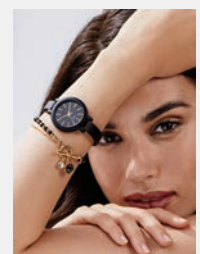
**BLACK SUEDE** (fresh & aromatic)  
Pack of 5 Samples  
006-468  
reg. \$2.25  
**NOW \$1.75**



**WILD COUNTRY** (fresh & aromatic)  
Pack of 5 Samples  
006-453  
reg. \$2.25  
**NOW \$1.75**



**HAIKU** (fresh & clean)  
Pack of 5 Samples  
578-367  
reg. \$2.25  
**NOW \$1.75**



## Display your jewelry in style

Black velvet-like fabric and cardboard. Imported.  
reg. \$4.99  
**NOW \$2**



**Bracelet Pillow**  
3" L x 3" W.  
149-230

# 10 LIP BALMS for only \$6.95

Buy  
5 packs of 10  
GET 20 FREE  
LIP BALMS



## LIP BALM BONANZA

An exclusive offer for Representatives. There's no limit to how many packs you can order. The prices shown are "your cost" for all Representatives.

**1 PACK OF 10 LIP BALMS**  
for only \$6.95  
(A \$20 VALUE!)

### PICK YOUR PACK!

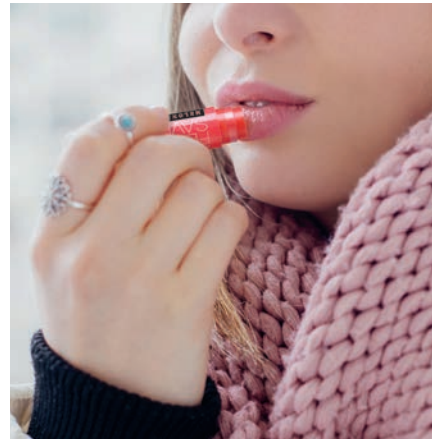
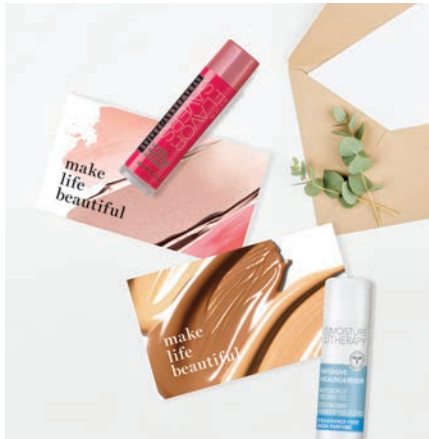
- 10 Moisture Therapy Lip Balms **134-116**
- 10 Dew Kiss Lip Dew Lip Balms **153-210**
- 10 Flavor Savers Lip Balms (Strawberry) **157-310**
- 10 Flavor Savers Lip Balms (Melon) **160-074**
- 10 Flavor Savers Lip Balms (Vanilla) **164-137**

**SELECT 2 FREE PACKS**  
**WHEN YOU BUY 5 PACKS**  
That's 70 lip balms  
for only \$34.75  
(A \$140 VALUE!)

**MIX OR MATCH**  
**YOUR PACKS**

## GIFT ON THE GO WITH LIP BALMS!

Check out the Digital What's New for a video featuring more tips and tricks.



- Give them out as party favors—they make the perfect gifting goodies.
- Drop a lip balm in your customers' orders to thank them for their purchases.
- Attach a lip balm to your business card to drop in orders or hand out.
- Include one with a Brochure to hang on your neighbors' door knobs.
- Give to local businesses you frequent, like the barista at your favorite coffee spot.
- Give out as teachers' gifts.
- Create your own gifting ideas, like free lip balms with your new customer's first order, or lip balms with a purchase.
- Donate mini care packages for health care workers at the local hospital and include a lip balm.



**DEO  
3-PACKS**

for only

**\$5.38**

OVER \$10 VALUE

# DON'T MISS OUT!

Take advantage of this deo offer in the C8 flyer





Time-trusted apothecary  
herbal traditions combined with  
modern Korean skin science.

# the dewy glow of your dreams



96%  
of people  
felt skin's  
moisture was  
replenished  
overnight\*

## aqua bomb sleeping mask

### For visibly dull, dry, fatigued skin

Locks in moisture with unique jelly-pudding texture! Replenishes with explosive hydration for smoother, more supple-looking skin and a healthy glow. With Scottish heather, an herb known to calm skin. Lightweight, pillow-proof formula. Use after or instead of moisturizer. Rinse off in AM. 2.53 oz. net wt.

**164-046** reg. \$38

now \$34

**C \$ 25.50 P \$23.80 PRP \$20.40**

### usage

After or instead of moisturizer, apply a thin layer evenly across your face. Leave on overnight and rinse off in the morning for ultra-hydrated, nourished skin. Mess-free, pillow-proof formula stays on skin.

## what's new special offer

Get 18 FREE SAMPLES with your purchase of any belif Aqua Bomb Sleeping Mask or Aqua Bomb Mist purchase.



Aqua Bomb + Moisturizing Bomb  
3 Packs of 3 Samples each!

\*Based on a consumer-perception study of those who expressed an opinion.

**NEW**

## aqua bomb mist

97.1% of people felt it added visible vitality to skin\*

### For an extra boost of hydration

Ultra-fine, soft and lightweight cooling mist hydrates skin for a radiant, healthy glow without smudging makeup. pH-balancing for oil-water levels. With chickweed, an herb known to soothe and moisturize. Full-size mist with a full-size refill. Use throughout the day under or over makeup whenever needed. Each, 2.02 fl. oz. **164-175** reg. \$38

now \$34 the set of 2

**C** \$25.50 **P** \$ 23.80 **PRP** \$20.40

### usage

Hold mist at arm's length from face. Close eyes and spray a light mist. Use throughout the day under or over makeup whenever skin needs an extra boost of hydration—does not smudge makeup.



full-size mist + full-size refill!



## water festival on-the-go travel kit

five mini-size favorites plus a new must-have

**Travel light...stay hydrated.**

**Great as try-it sizes, too.** Includes:

- The True Cream Aqua Bomb, .33 fl. oz.
- The True Cream Moisturizing Bomb, .33 fl. oz.
- Moisturizing Eye Bomb, .16 fl. oz.
- Aqua Bomb Jelly Cleanser, .01 fl. oz.
- NEW! Aqua Bomb Sleeping Mask, .33 fl. oz.

Vinyl waterproof case, 4" W x 3" D x 5" H, with ring-pull zipper and wrist handle.

**164-180** reg. \$28

now \$23 the 5-piece kit

**C** \$17.25 **P** \$16.10 **PRP** \$13.80

**NEW**

# more explosive moisture from belif

for an extra boost of hydration

### belif aqua bomb mist

Ultra-fine, soft and lightweight cooling mist hydrates skin for a radiant, healthy glow. Full-size mist with full-size refill. Use throughout the day under or over makeup whenever needed. Each, 2.02 fl. oz.

**164-175** reg. \$38  
**now \$34 the set of 2**  
**C** \$25.50  
**P** \$23.80  
**PRP** \$20.40

### belif aqua bomb sleeping mask

Replenishes with explosive hydration for smoother, more supple-looking skin and a healthy glow. Jelly-pudding texture. Use after or instead of moisturizer. Rinse off in AM. 2.53 oz. net wt.

**164-046** reg. \$38  
**now \$34**  
**C** \$25.50  
**P** \$23.80  
**PRP** \$20.40



for dull, dry and fatigued skin



More details inside, and a What's New Special Offer. See pages 38-39.

Follow our social media channels:

- Facebook.com: Avon
- YouTube.com: Avon

- Instagram: @AvonInsider
- Twitter: @AvonInsider
- Pinterest: AvonInsider

Connect with other Representatives:

- Facebook.com: AvonUSARepresentatives
- YouTube.com: AvonUSAREps



Your What's New discount is based on your Commission Level. See page 2 for details.

2021 The Avon Company 59580-9